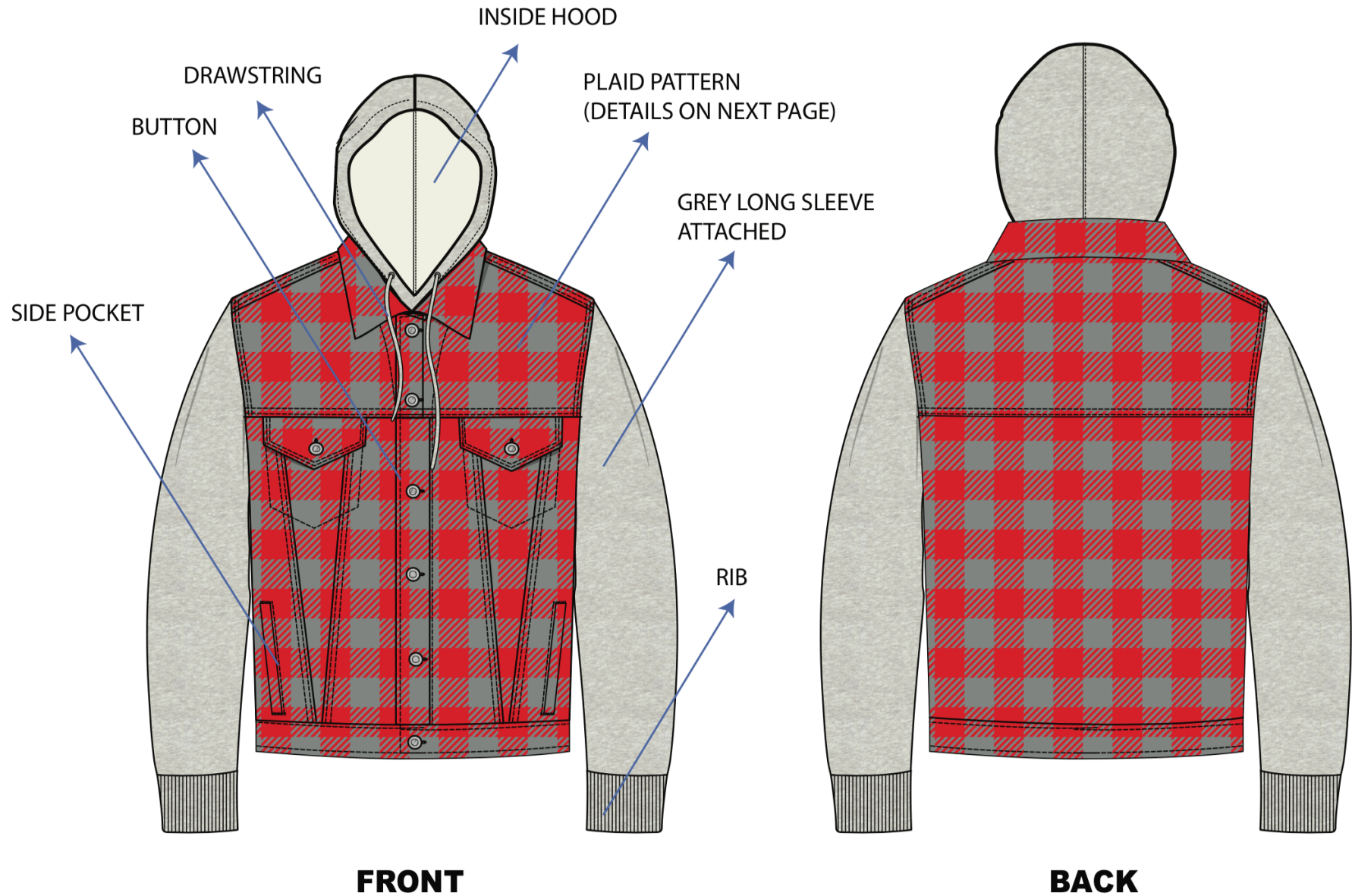


PORTFOLIO

SOME OF MY CUSTOMER SATISFIED WORK

RUPOM

HOODIE WITH PLAID PATTERN



#NOTE: FOLLOW ALL THE STITCHING DETAILS



#C63133
= Persian Red

Color-Conversion	
HEX #C63133	HEX 359, 61, 49
RGB 200, 49, 51	XYZ 26, 35, 5
CMYK 0, 76, 75, 22	LUV 45, 114, 34
LAB 45, 59, 36	Hwb 359, 19, 22

HOODIE

COLOR: BLACK

TECHNIQUE



Towel
Embroidery

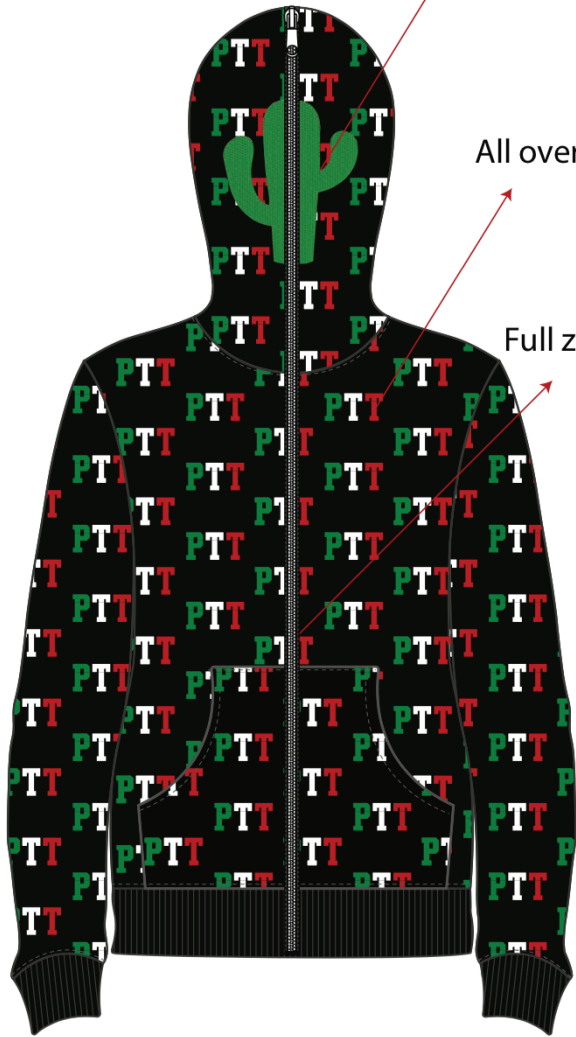
TECHNIQUE



Towel
Embroidery

All over print

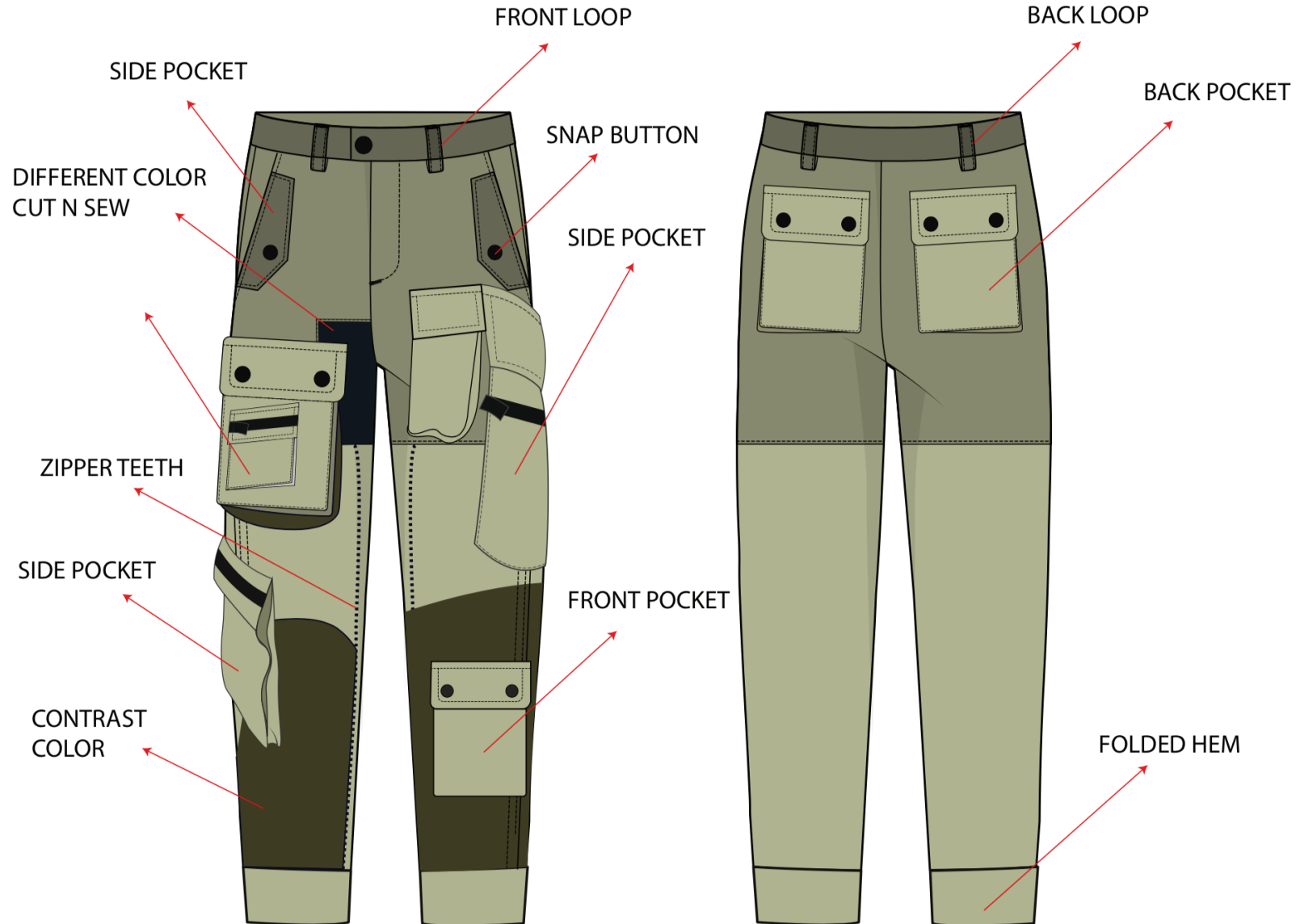
Full zipped



WINDBREAKER PANT

MULTI-FUNCTIONAL

HIGH QUALITY WINDBREAKER PANTS: 55% polyester, 45% nylon.



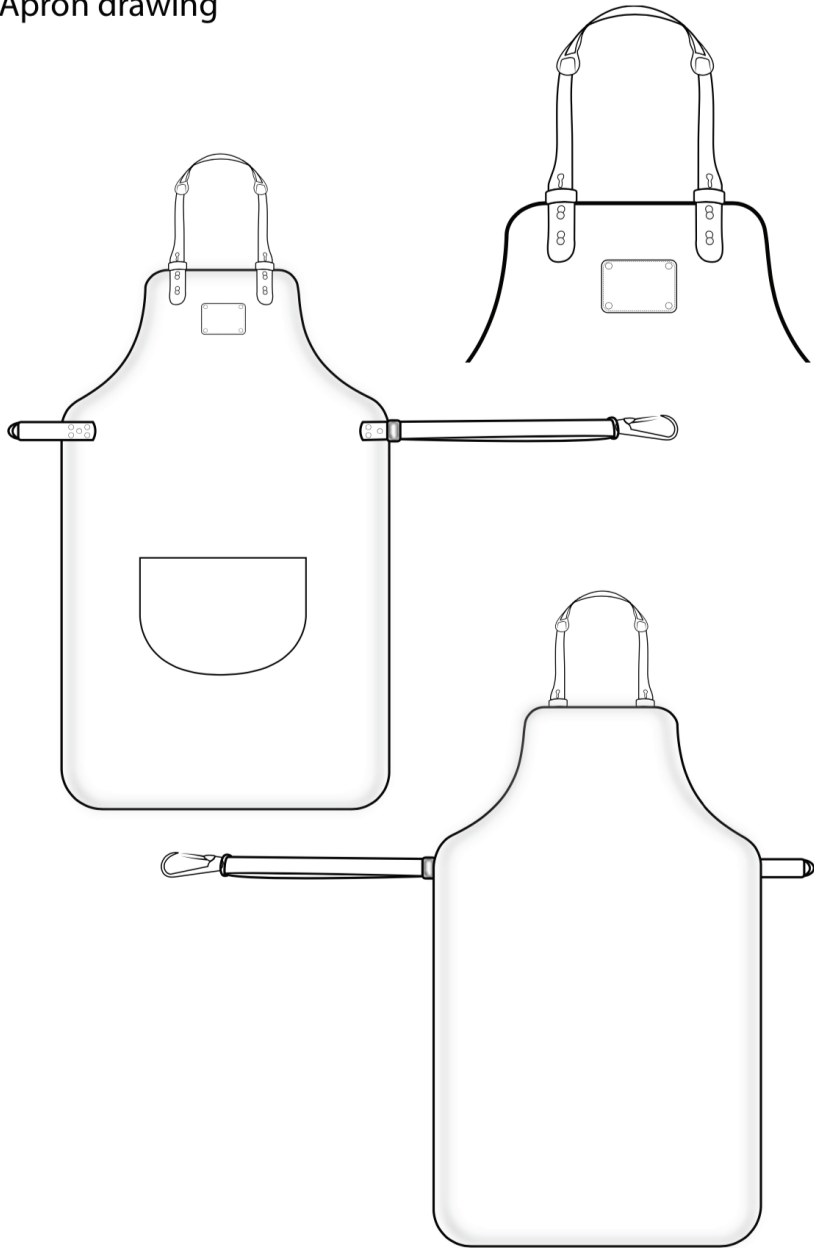
MATERIAL (BLACK SHEEP FUR)



MATERIAL (LIGHT PINK SHEEP FUR)



Apron drawing



①



②



③

ALL SETS



Royal blue

Chrome finish logo

Black leather

ZIPPER

Embossed signature



SIDE VIEW



ANGLE VIEW



BACK VIEW



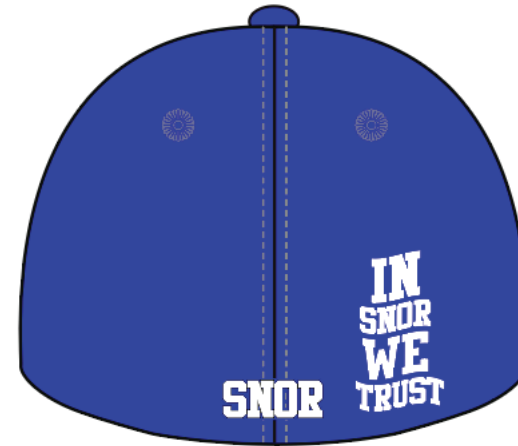
BOTTOM VIEW

BACKPACK DESIGN

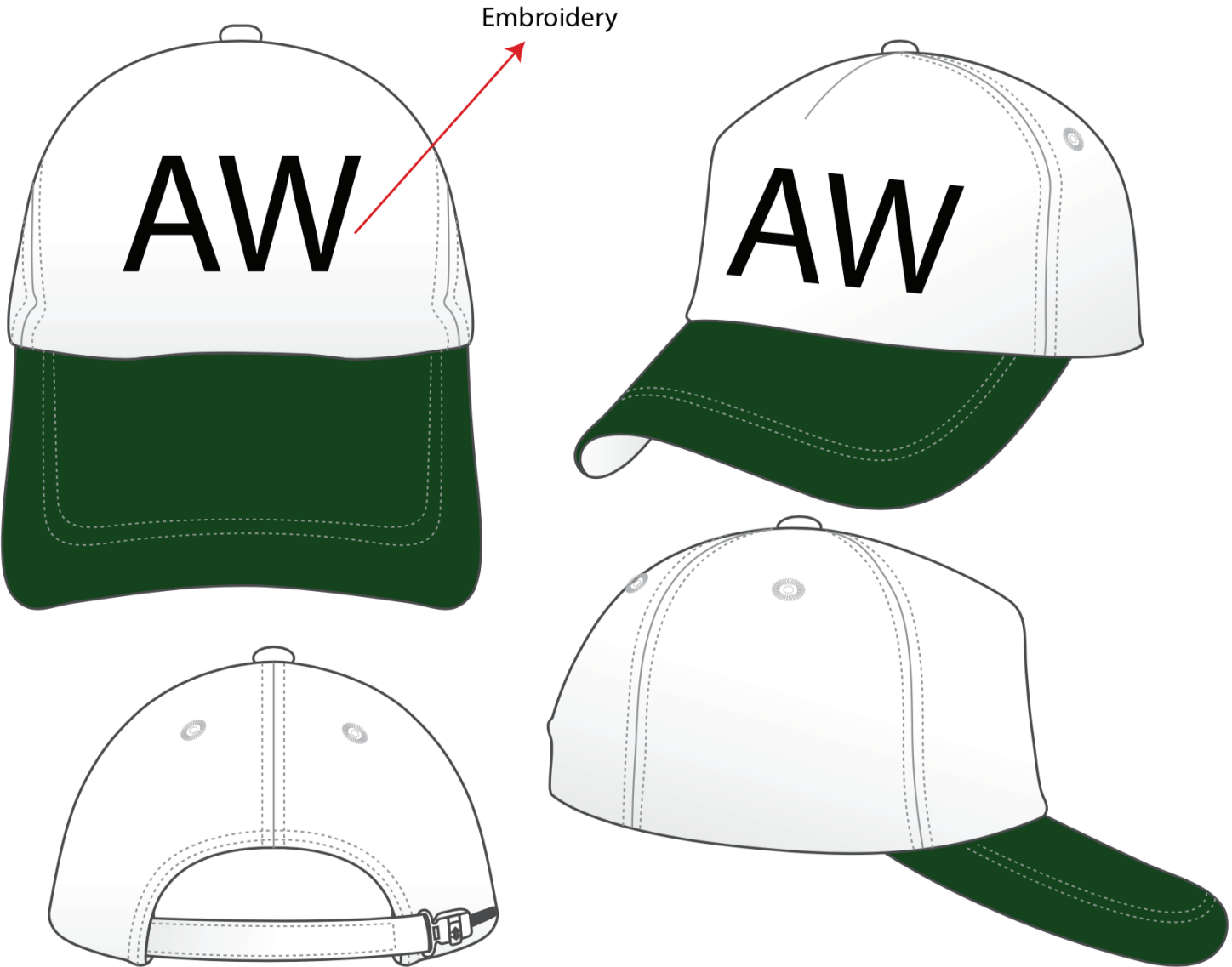
Color: BLACK



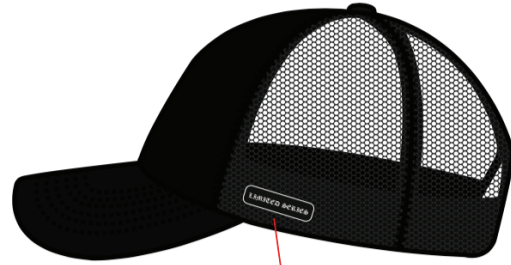
FITTED CAP DESIGN



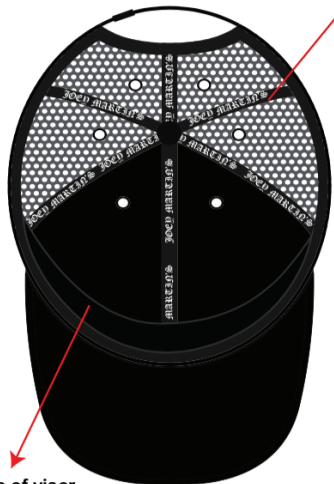
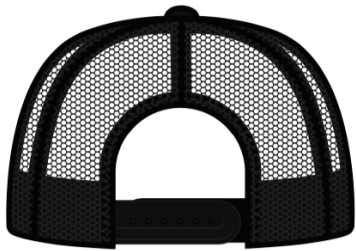
CAP design



HAT DESIGN



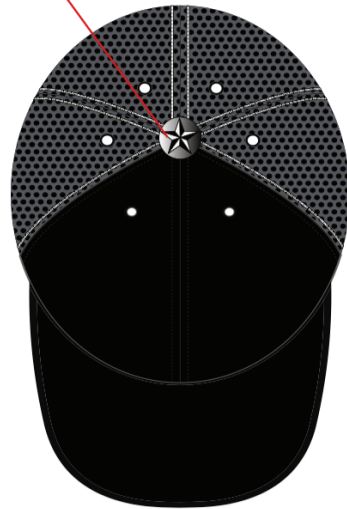
LIMITED SERIES



White typo (Old london font)

OPT-1
100% COTTON
MADE IN P.R.C

OPT-2
100% COTTON
MADE IN P.R.C



FRONT



RIGHT SIDE VIEW



BACK

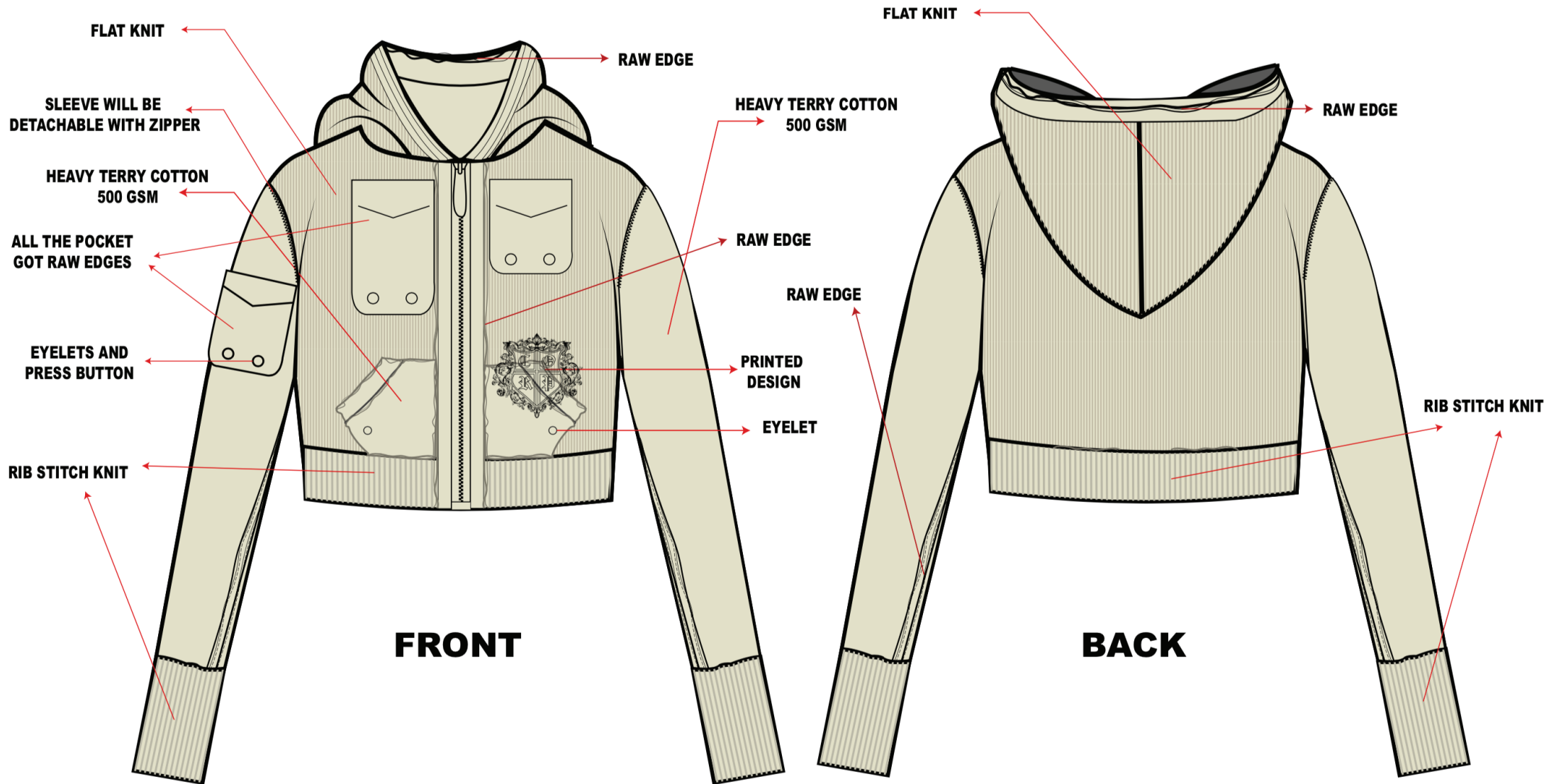


LEFT SIDE VIEW

Underside of visor
IN BLACK

White interior
Cap full black interior typo white

SEASON	WINTER	STYLE: KNITTED ZIP HOODIE	COLOR: CREAM/BEIGE	CORPORATE WORLD
NAME: KNITTED ZIP HOODIE WITH CHEST PRINT		FABRIC: JACQUARD KNIT HEAVY COTTON	SIZE: MEDIUM	
FLAT SKETCH				



SWIM SHORTS

SEASON	SPRING/SUMMER 23	DATE	24/03/2022	SIZE- M	Fabric material: 100% Recycled Polyamide
STYLE	001	BRAND	MOSCHINO		
DESCRIPTION	SUSTAINABLE SWIM SHORTS MEN'S				

Technical Chart



DESCRIPTION: WAIST BAND WITH CONTRAST COLOR
RUBBER ELASTIC BAND

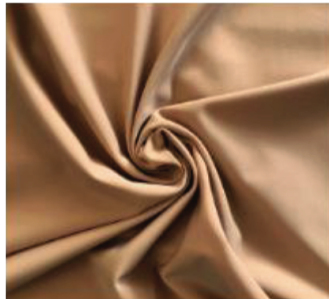
DRAWSTRING QUALITY:



Fabric details:



RECYCLED POLYESTER



ECONYL

EYELET QUALITY:



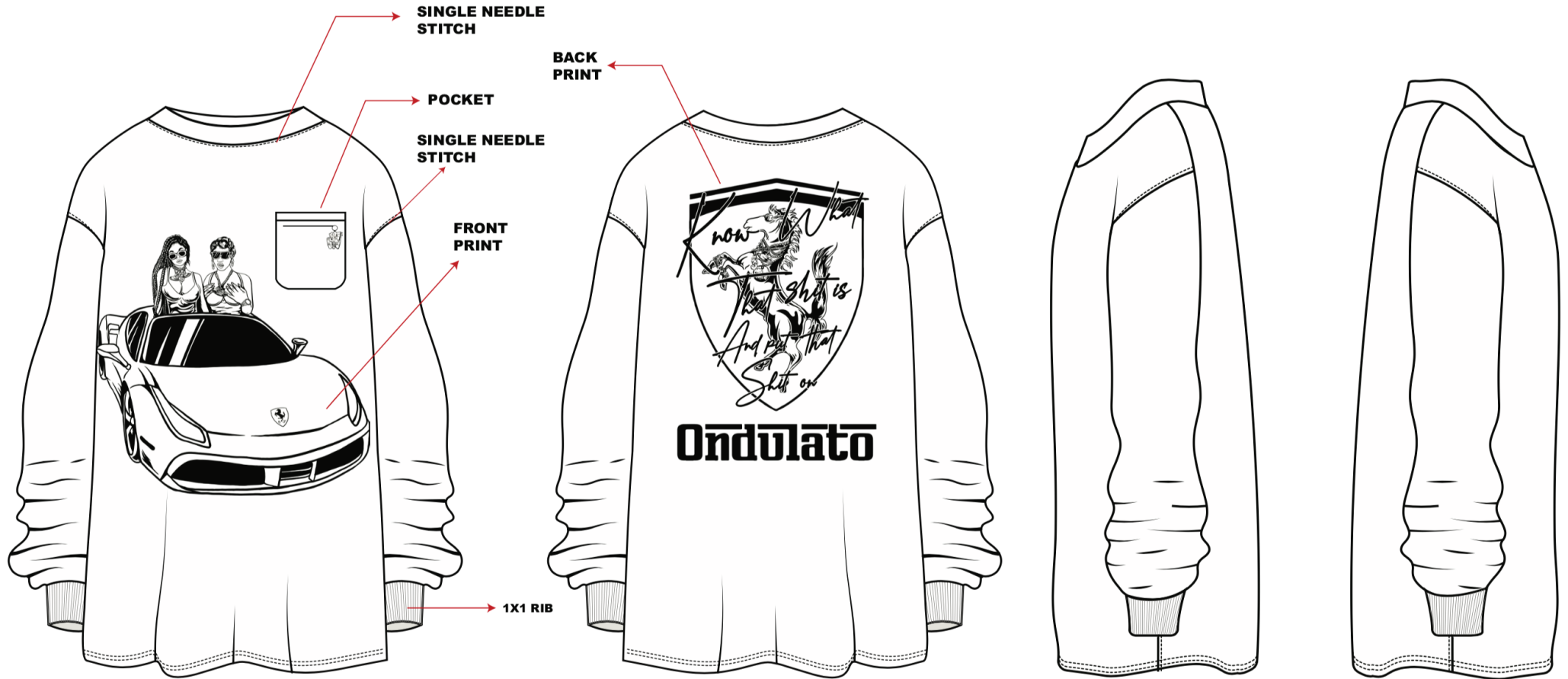
Fabric material: 100% Recycled Polyamide
ALL OVER PRINT (MULTICOLOR)



WAISTBAND

BODY PRINT

LONG SLEEVE SHIRT



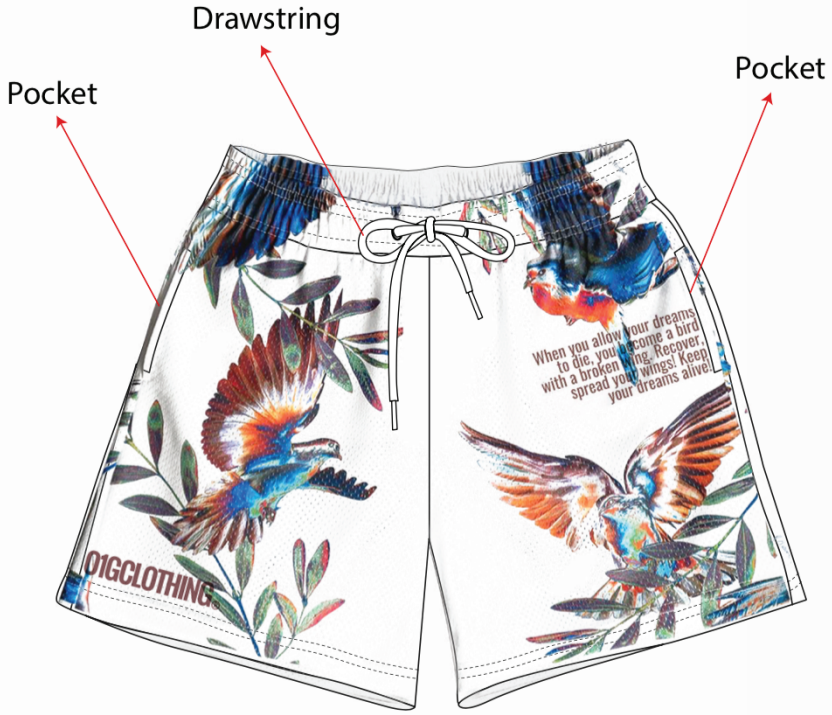
FRONT

BACK

SIDE VIEW

SHORTS

MESH MATERIAL
COLOR WHITE



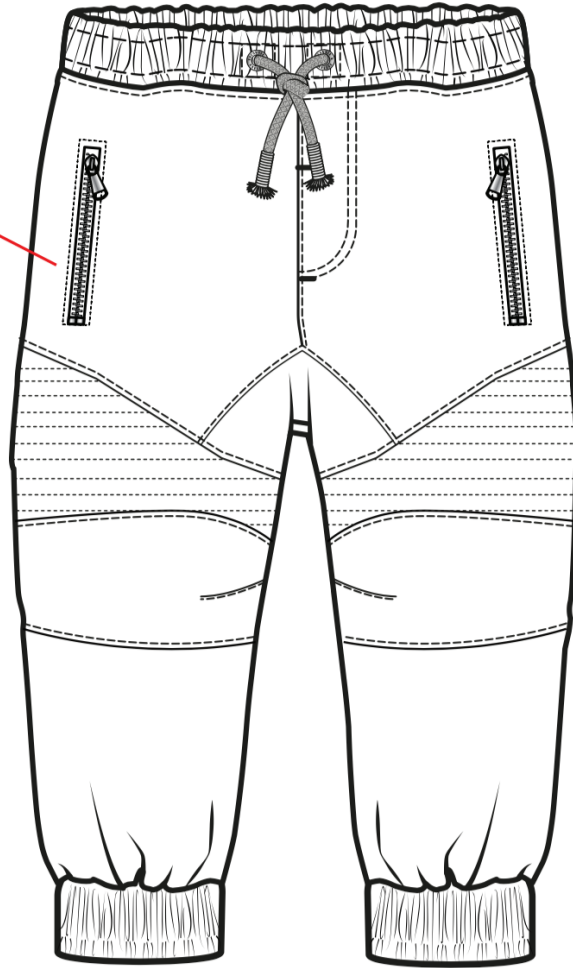
FRONT



BACK

LEB PANT

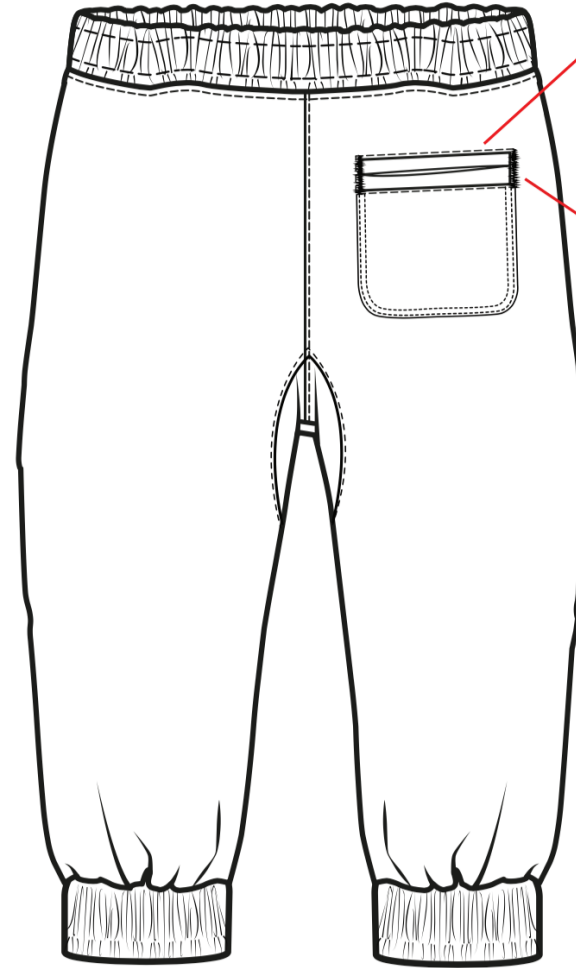
ZIPPER



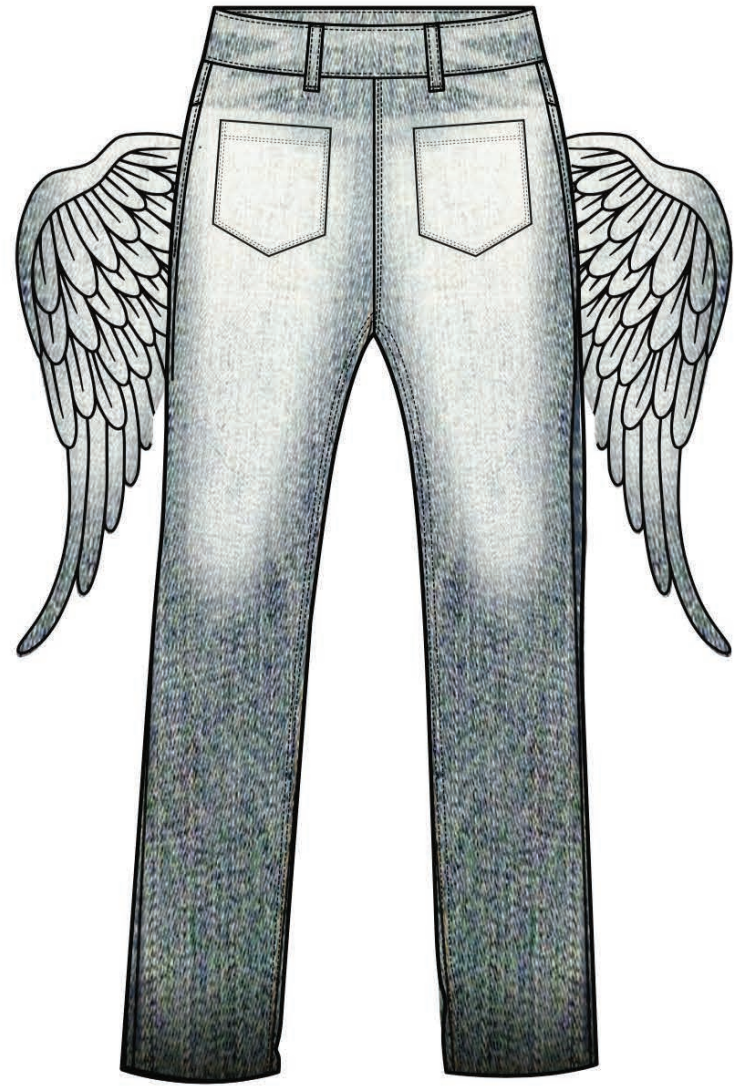
Front

POCKET

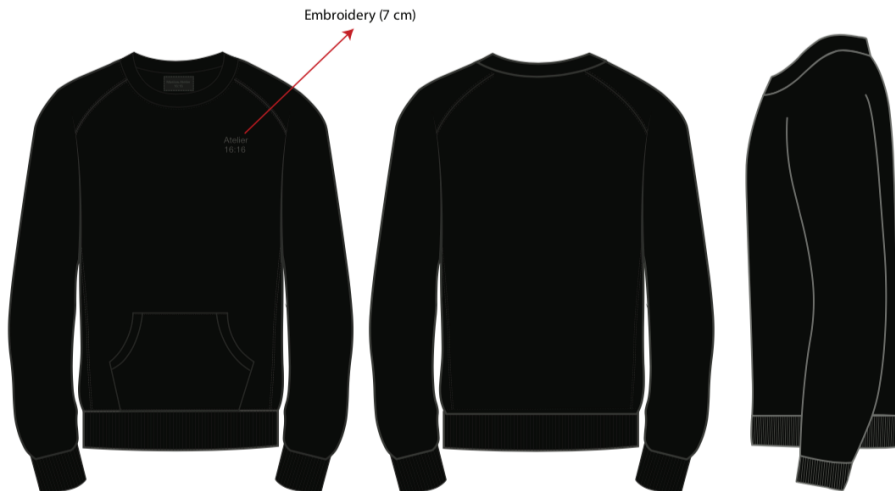
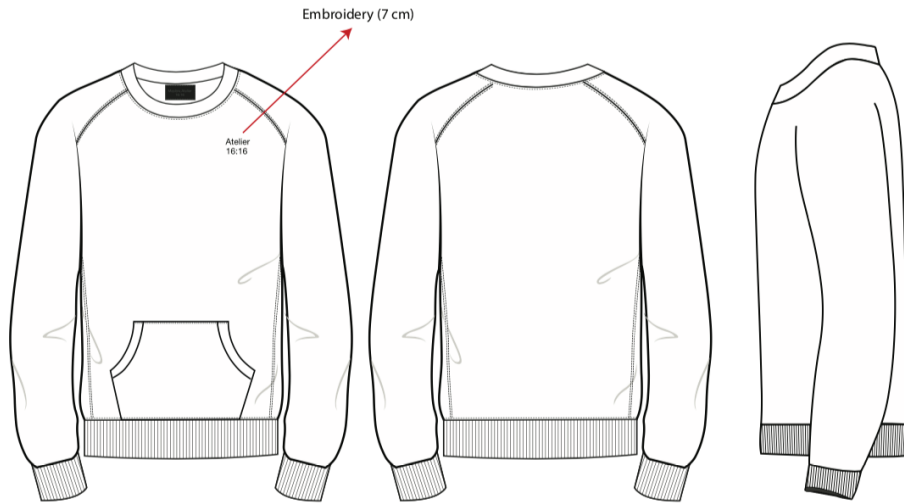
Bar tag



Back



Men's Regular fit	Rib neck line 3cm	Outer stitch colour same as fabric	Invisible kangaroo pocket front
Raglan sleeve	eece 280gsm organic cotton	Colours White, black and bottle green	Mens Sweat top Regular fit.
Style Name	Inner stitch colour yellow		



Mens Regular fit

- Rib neck line 3cm
- Raglan sleeve
- Brush fleece 280gsm organic cotton
- Inner stitch colour yellow
- Outer stitch same as fabric
- Colours of garments White, black and bottle green
- Invisible kangaroo pocket front

Cuff measurement : 7cm
Hem measurement: 7cm

MEDICAL SCRUB (FEMALE) - 04

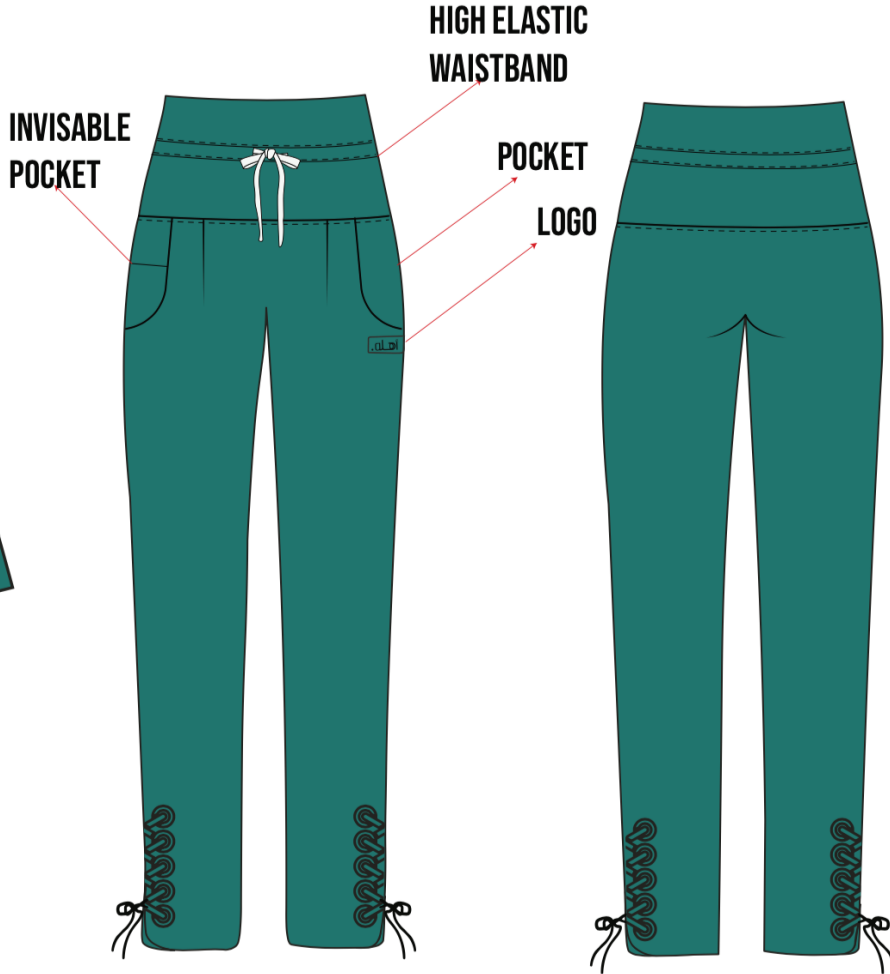
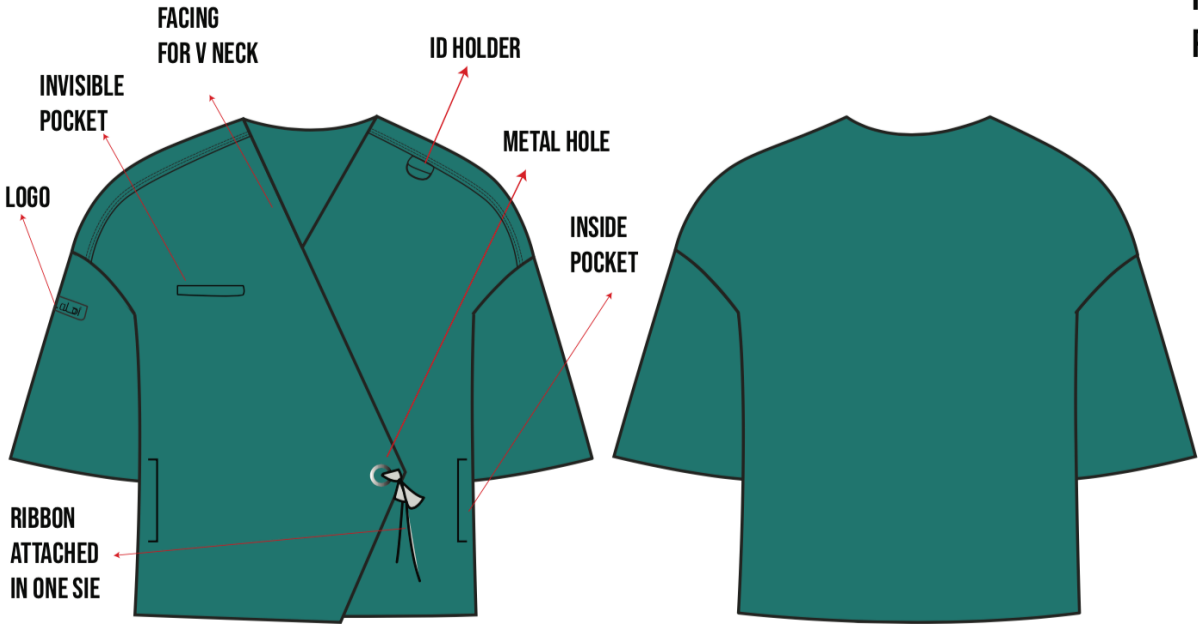
Style:	Fabric: 72% Polyester 21% Rayon 7%Spandex
	Color: Hydrogreen

Fabric function: Quadrilateral elasticity Moisture absorption and perspiration Air permeability Light and comfortable Water proof

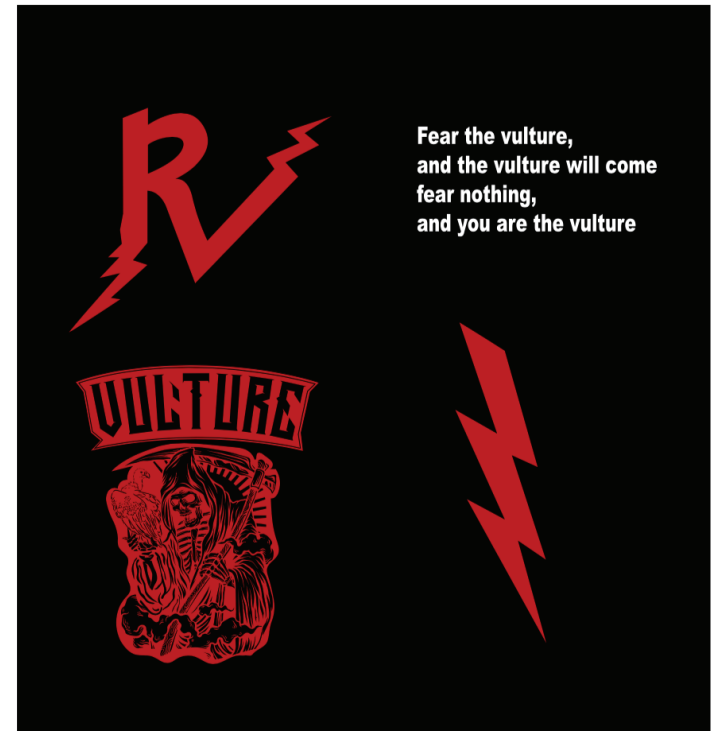
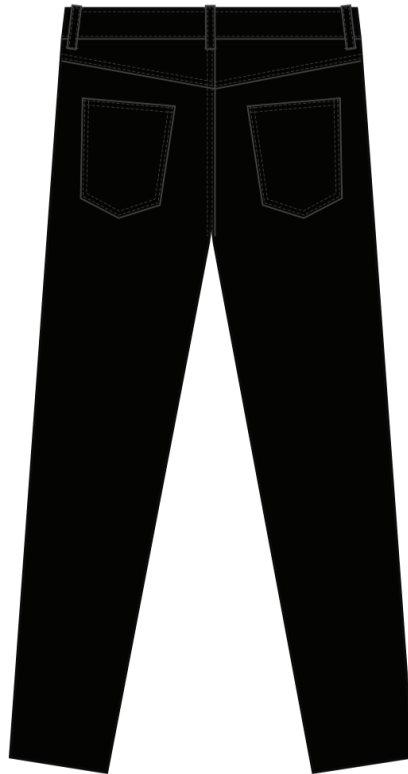
Blood spatter Antibacterial

COLOR

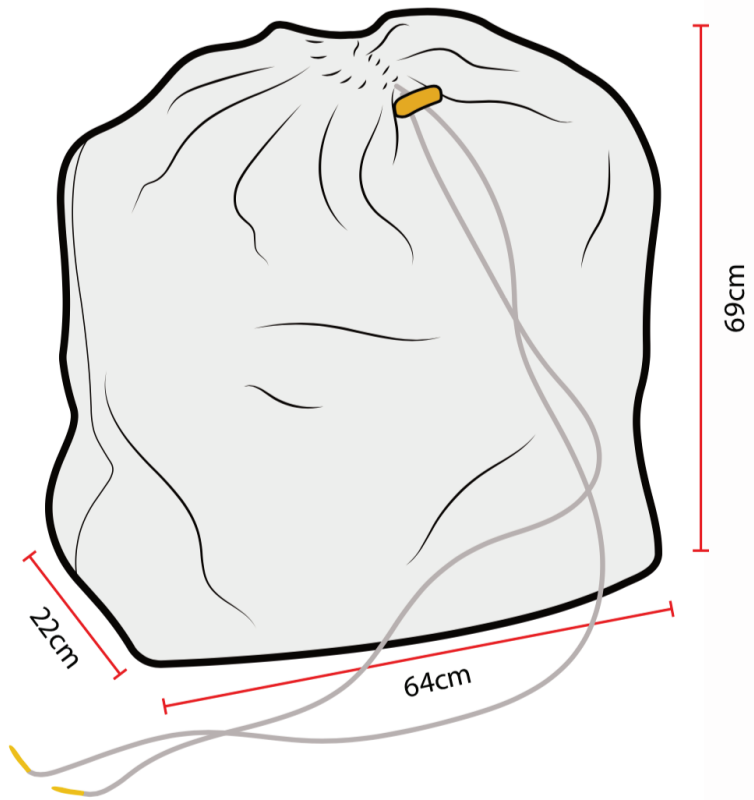
- Black
- Navy
- Graphite
- Cell Blue
- Royal Blue
- Burgundy
- Hydrogreen
- Slate



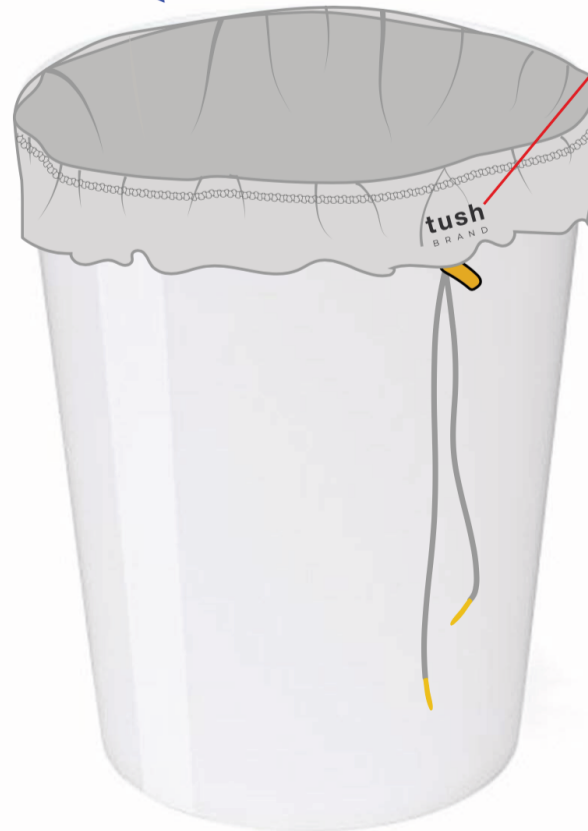
Combo 01



PAIL LINER



Please use the same pattern as daiper cover for inside layer of bag



LOGO

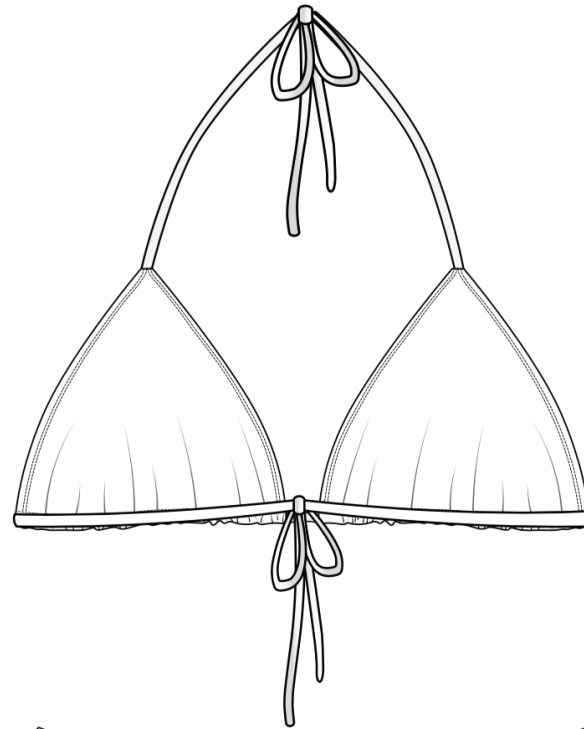
4.2 cm



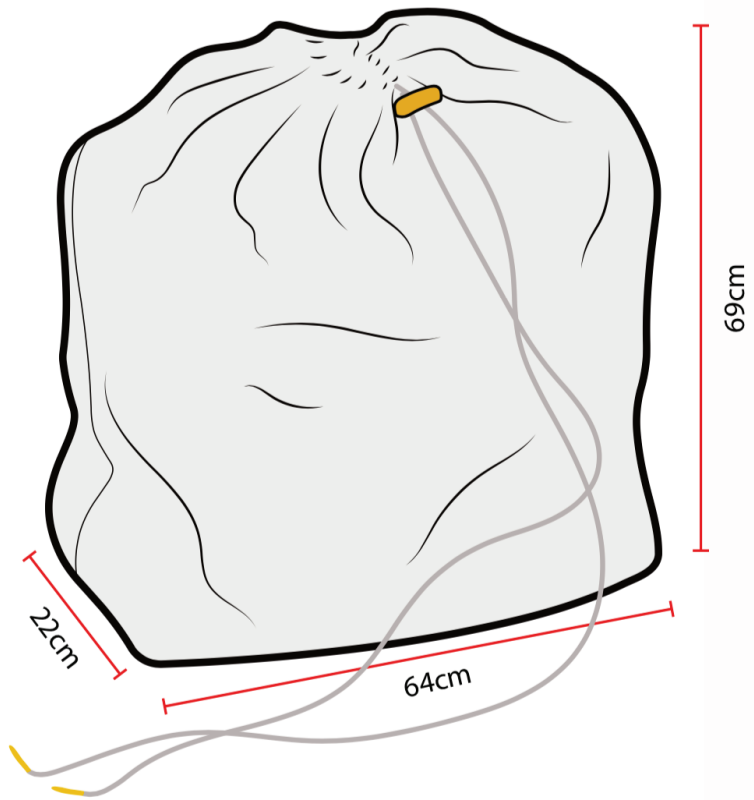
2.8 cm

Printed on high quality ribbon material

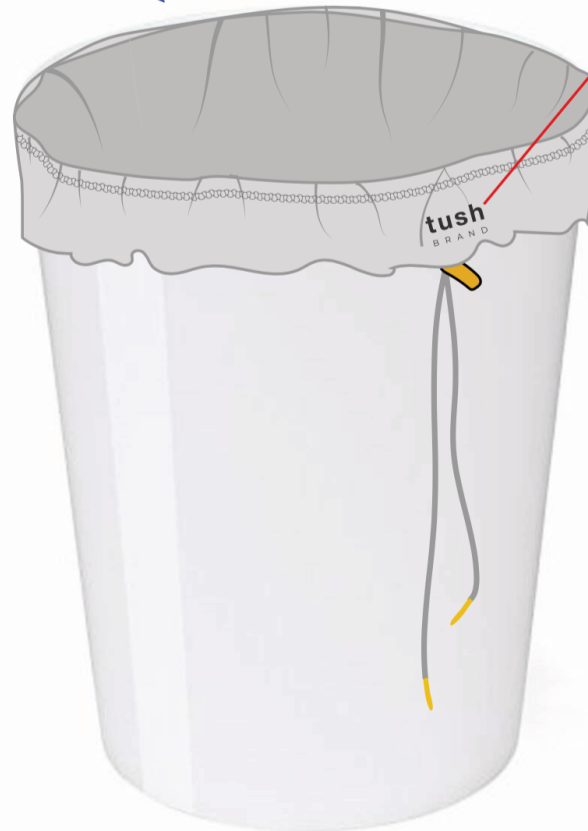
PAIL LINER IN BIN



PAIL LINER



Please use the same pattern as daiper cover for inside layer of bag



LOGO

4.2 cm



2.8 cm

Printed on high quality ribbon material

PAIL LINER IN BIN

HOCKEY JERSEY

FLAT SKETCH:



LOGO



Description:

Abrasion resistant fabric, polyester blend with added stretch.

Super soft moisture wicking technology, ultra breathable.

Custom, light weight, fully sublimated jersey.

No chance of cracking, fading, or peeling, high quality custom colors and graphics.

Hockey Jersey

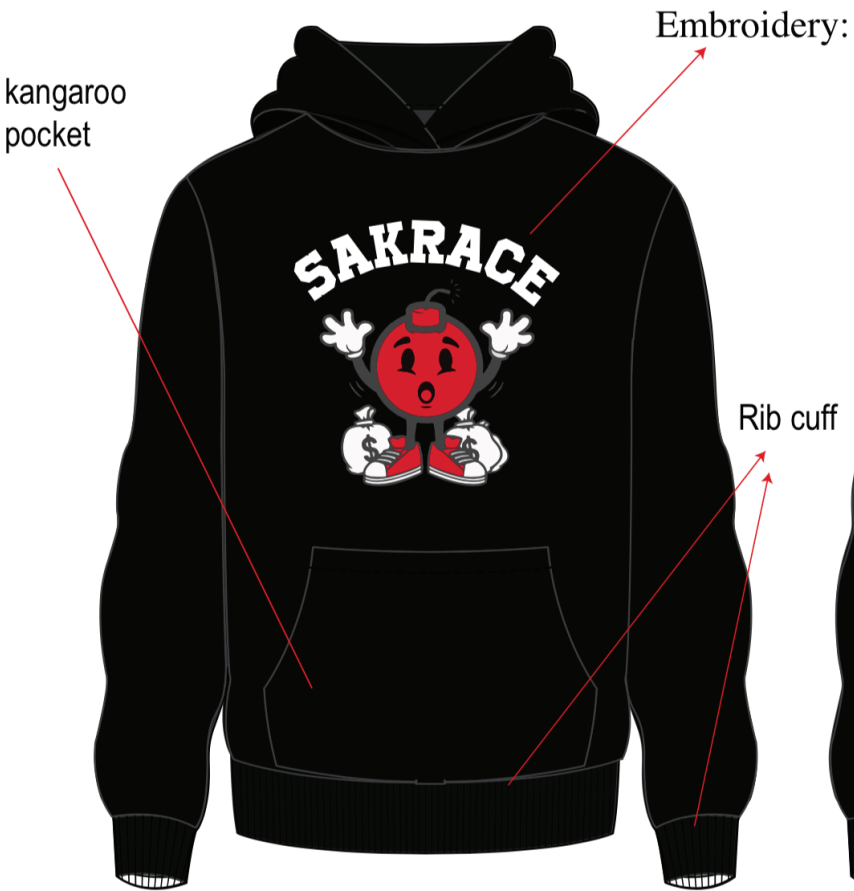
Hockey Jersey				
Size	Body Length		1/2 Chest Width	
	CM	INCH	CM	INCH
S	73.4	28.6	58.4	22.8
M	76.2	29.7	61	23.8
L	78.7	30.7	63.5	24.8
XL	81.3	31.7	66	25.7
2XL	83.8	32.7	68.6	26.8
3XL	86.3	33.7	71.1	27.7
4XL	89	34.7	73.7	28.7

KIDS HOODIE



HOODIE

Regular fit	Fabric: Premium heavy-weight fabric Jersey Fleece	Material: 100% Cotton
	GSM: 300	color: Black



Front



Back

EMBROIDERY:



Shirt design



Front



Back

Wh003

GARMENT- DRESS

CATEGORY-

COLOR-

STYLE NO: Wh003

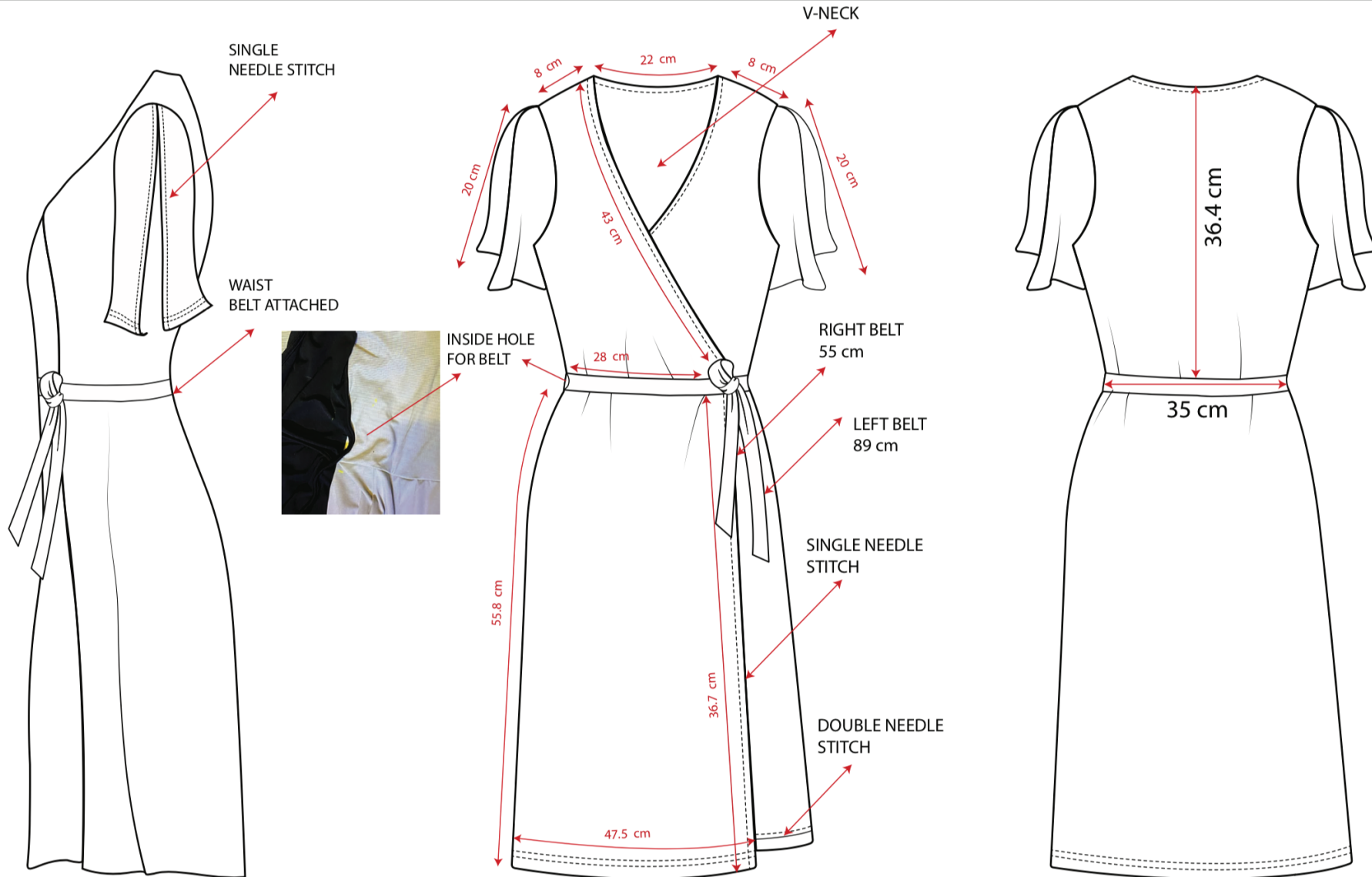
SIZE- M

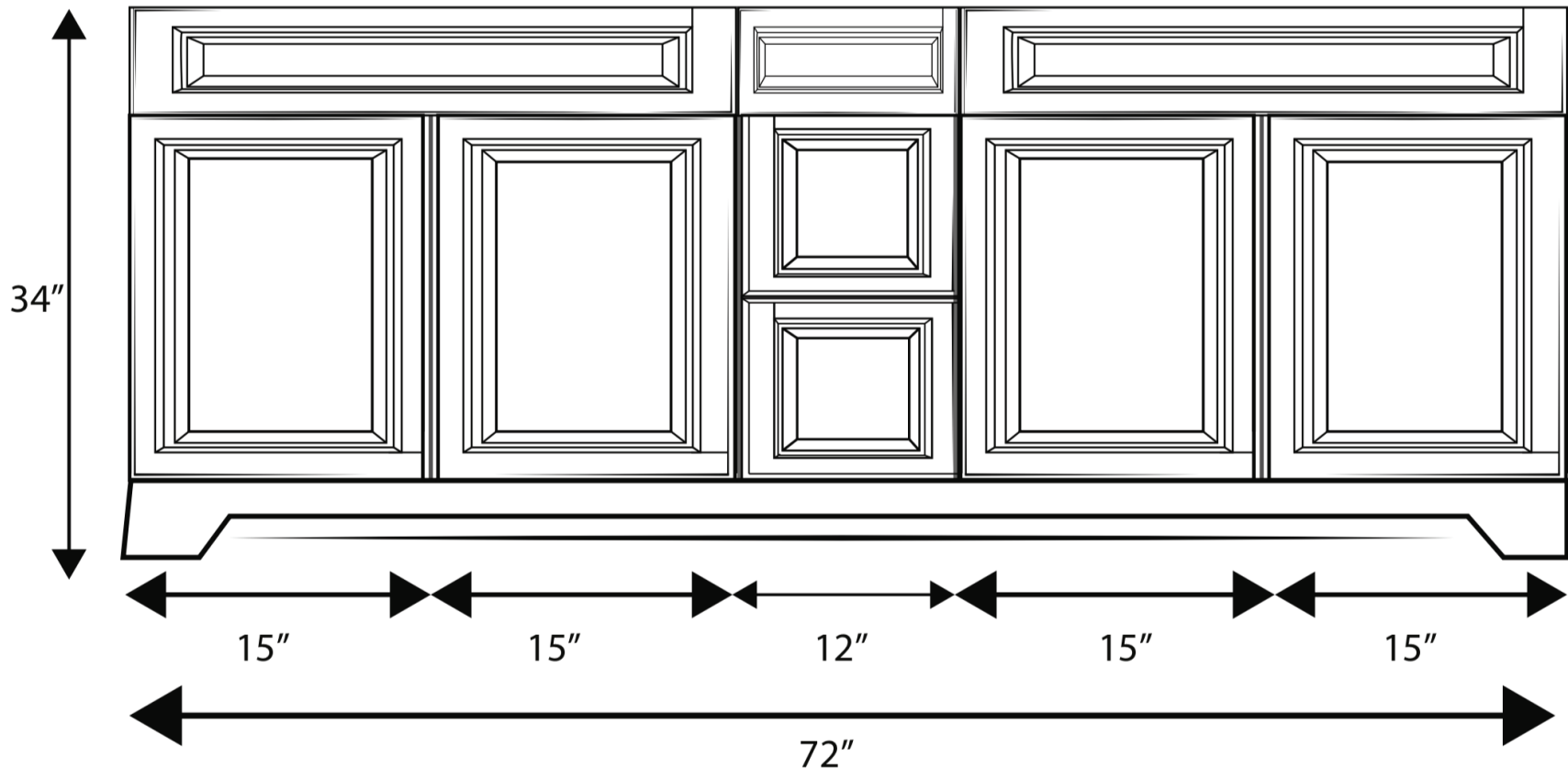
SAMPLE SIZE M

FABRIC- 75% Nylon+ 25% Spandex

GSM- 220

DRESS





PRINCE

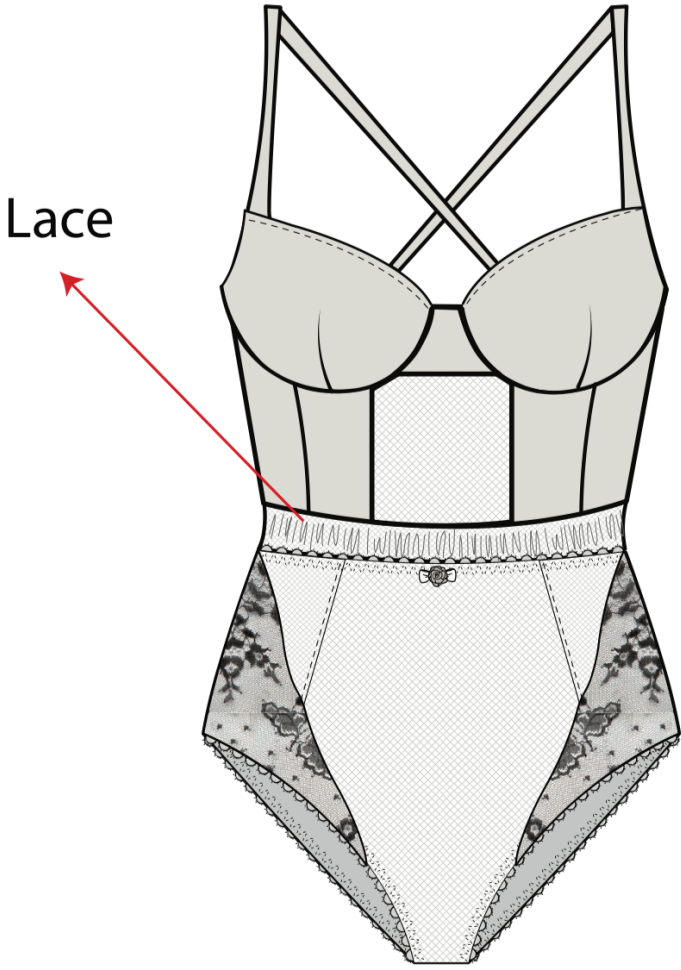


VIBES



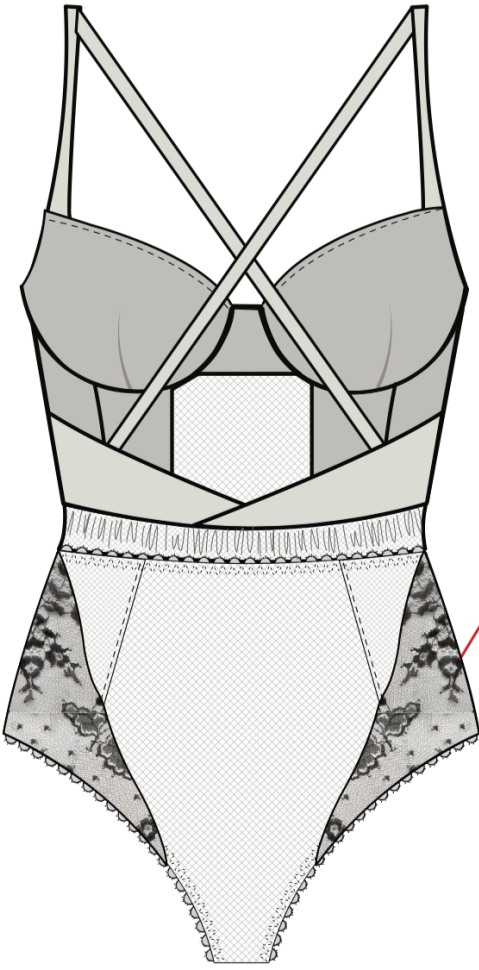
**That's a
hard pass**

lingerie design 2



Lace

Front



Lace

Back

Style #1

CATEGORY- WOMEN

SIZE RANGE: 20-40

COLOR- Cherry Red

SEASON- AW 23

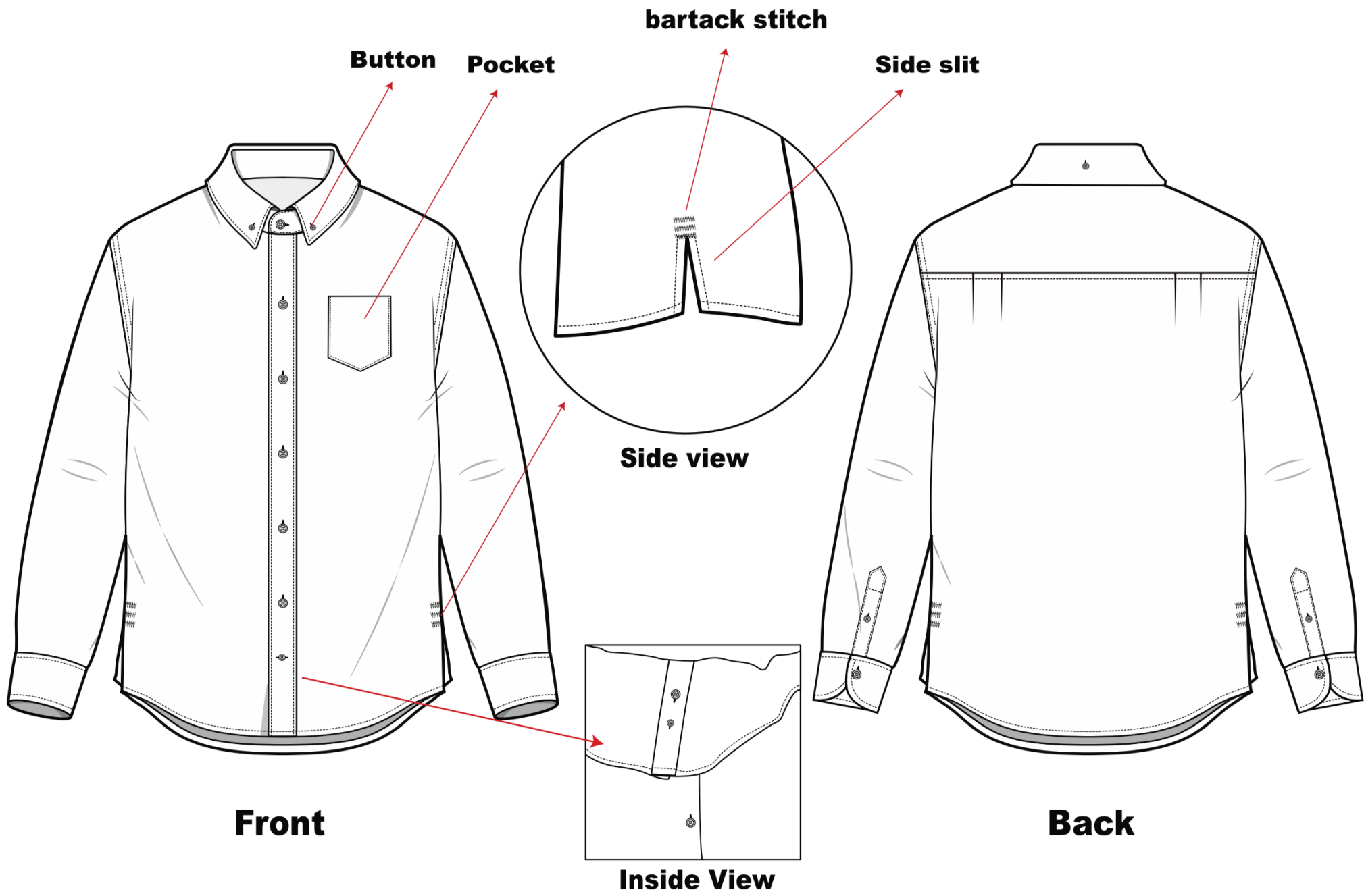
FABRIC- Net Lace Dress (heavy embellished)

NOTE- ALL THE MEASUREMENT SPECIFICATIONS GIVEN ARE ACCORDING TO THE STANDARD SIZE



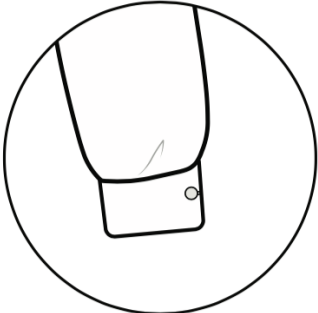


BUTTON DOWN



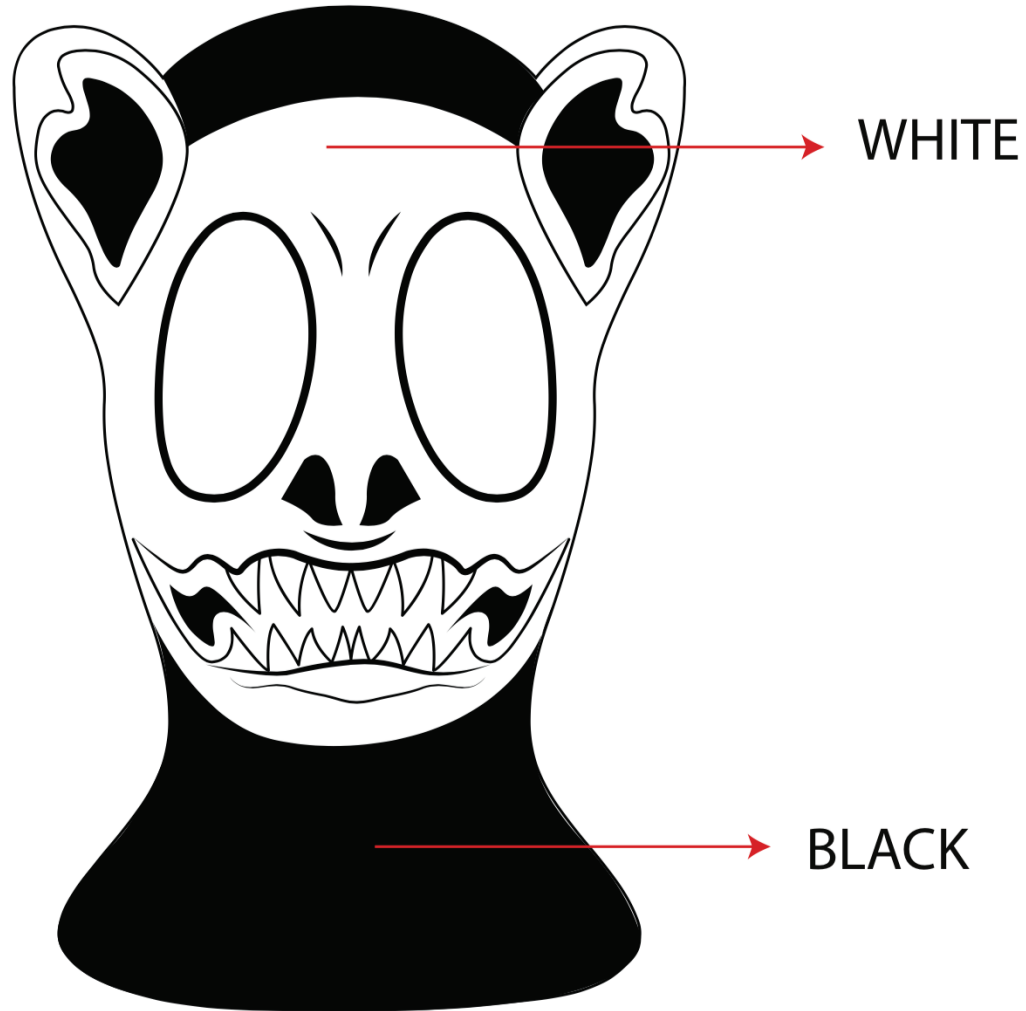


Front



Back

SKI MUSK



Materials:

100% Acrylic

ONE SIZE FITS MOST -

Measuring at 14" x 7" inches, this ski mask is sure to fit over practically any size adult head.

polyester cotton

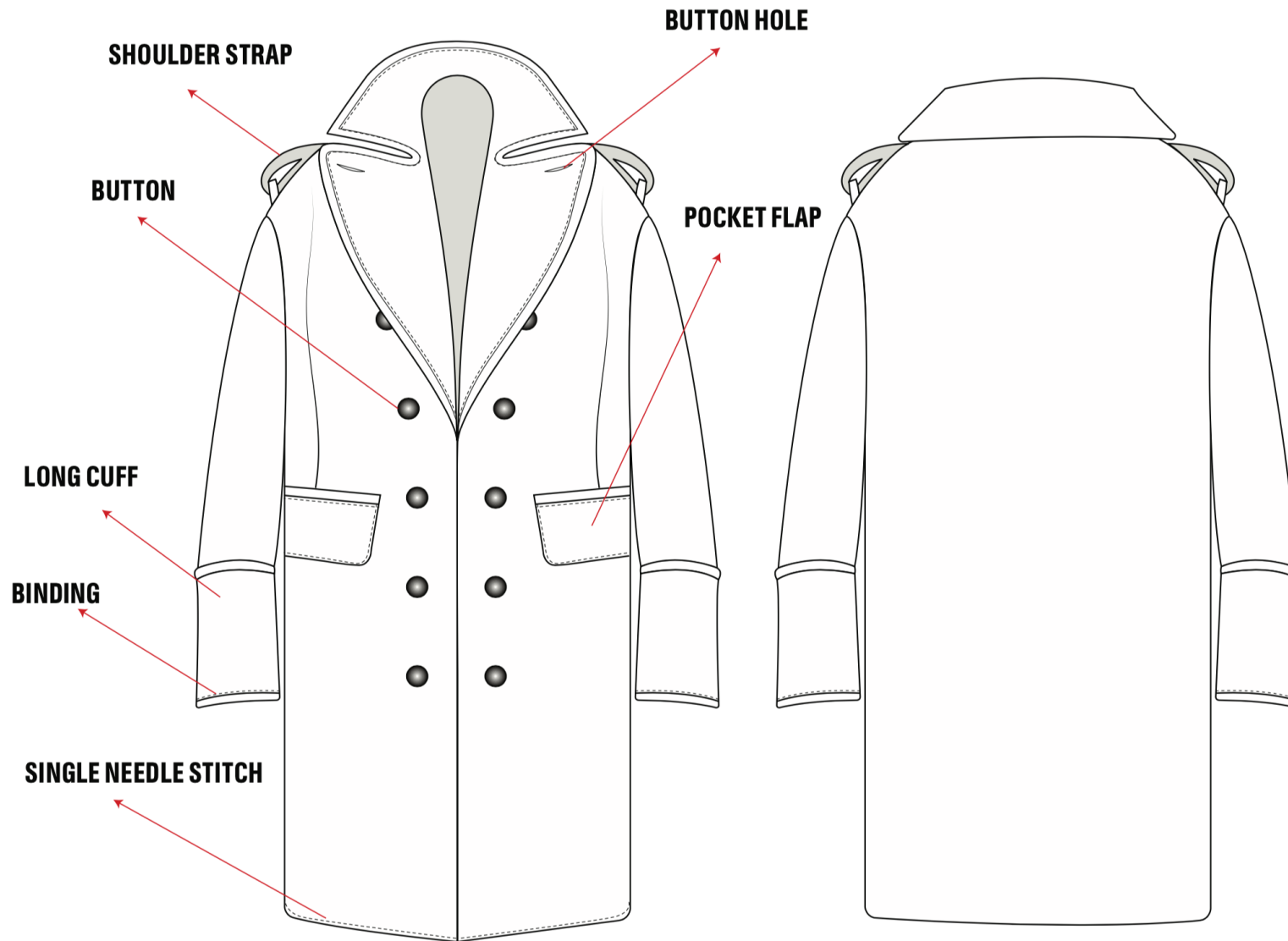
Machine Wash

Fastening: Pull On

Balaclava

Stretch

MEN'S JACKET

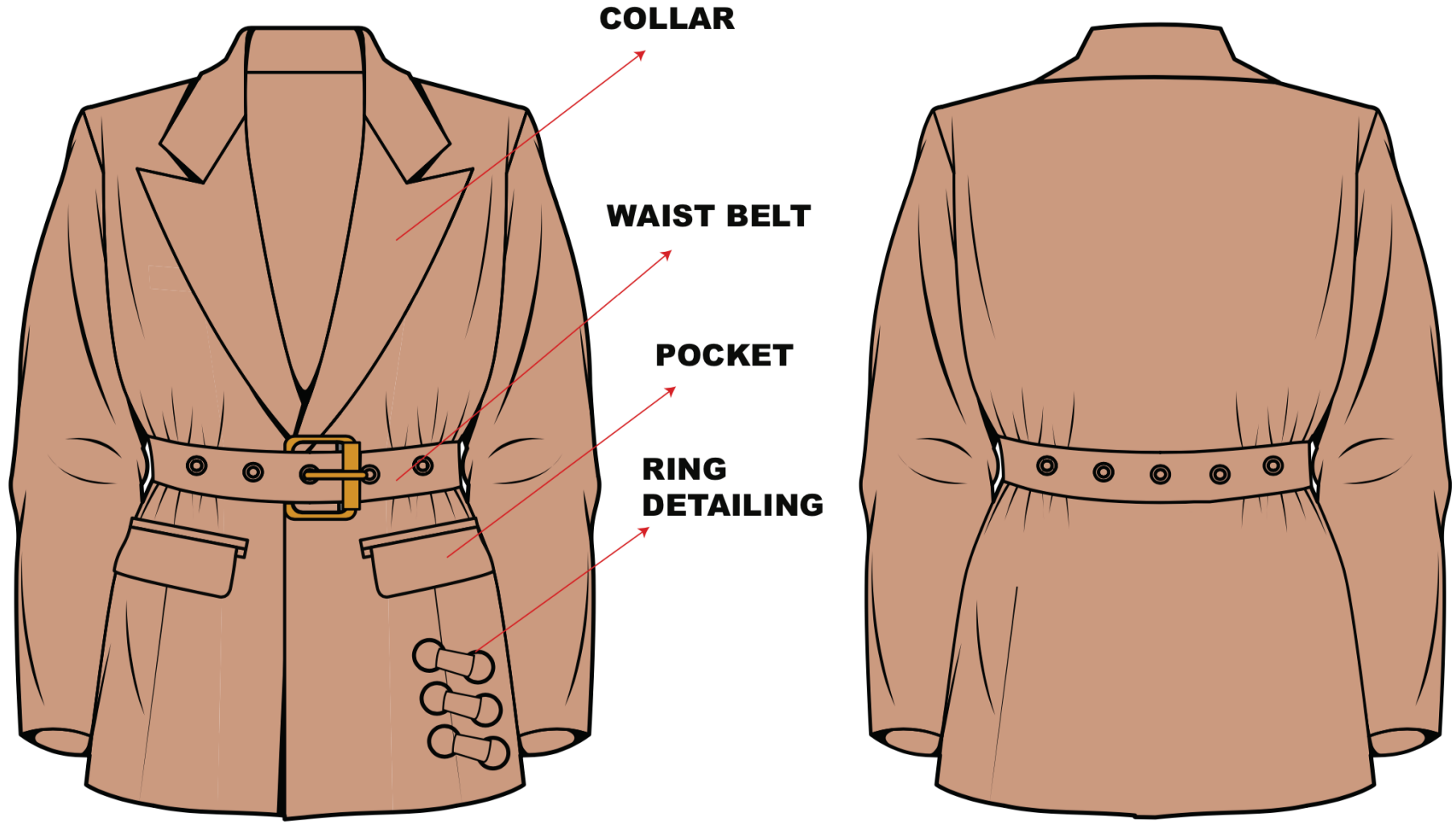


WOMENS BLAZER

Material: 95% polyester, 5% elastane

Dry clean

SANDY PINK



COLLAR

WAIST BELT

POCKET

**RING
DETAILING**

mockup